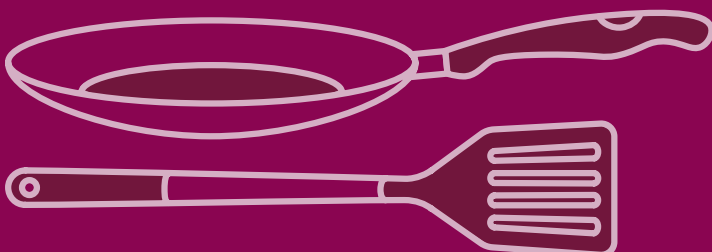
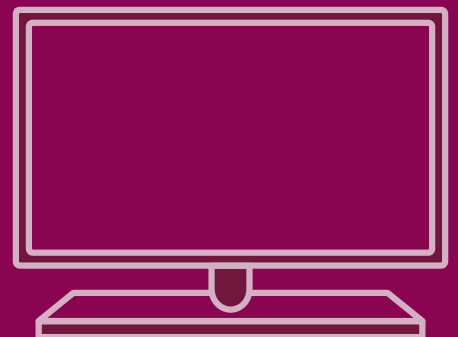


Furnishing Futures



Framework
For your future



About Us

Framework delivers housing, health, employment and support services to more than 16,000 people per year across the East Midlands and in South Yorkshire. Regardless of their past, or the challenges they face, we empower people to discover a better, more independent future.

Framework's aim is for individuals and families to be decently housed and supported, looking to the future with hope and living in inclusive communities where people are valued for who they are and what they can be. Our services provide a safety net and a platform for real and lasting change.



The Challenge

Supported housing is at the heart of what we do. We support around 3,000 people every year through a range of supported housing services, laying the foundation upon which our service users are empowered to build a better future for themselves.

Our dedicated staff work tirelessly to help the people we support to make positive change in their lives, guiding them on their journey towards independent living. As an organisation, we are also always looking to expand the number of housing services we are able to offer as we continue our mission to end homelessness and tackle disadvantage. All of this means that, each year, we need to provide new furnishings for around **600 individual units of accommodation**.

As a charity and in the context of the current economic climate, this is a constant financial challenge which places immense pressure on our ability to maintain the excellent lifechanging services for which we are renowned.

The Solution

The Department for Environment, Food and Rural Affairs (DEFRA) estimates that, in 2020, the UK generated approximately **28 million tonnes of commercial waste**, much of which was incinerated or sent to landfill.

Amongst that waste are many thousands of items of hard and soft furnishings – often in great condition or still brand new – that could be given a new lease of life. What many retailers might consider to be ‘dead stock’ is seen by charities like Framework as something that can help build new lives.

If you are a producer or retailer of hard or soft furnishings, you are **our solution**. If you have a waste problem for high-quality ex-display, returned or end-of-line stock, we are **your solution**. Join forces with Framework through our Furnishing Futures initiative and donate your dead stock to give it – and the people we support – a new life.

For every donation you make, we will provide you with a tailored impact report, outlining the number of people your donation will support and the number of items you have diverted from landfill. You can use this information to demonstrate your social and environmental impact as a business when determining your progress towards achieving your ESG goals.

How it works

There are a number of reasons why you might be in a position to make a donation. You might have end-of-line or ex-display stock taking up space in your warehouse, or you may simply be having an office refurb and wish to donate your old furniture. These may constitute a one-time donation.

If you have a regular stream of returned stock, for example, that you are unable to resell, you may wish to donate this to Framework on a regular basis. Making multiple donations of stock to Framework is an effective way of making a difference to our charity and the people we support, whilst also making marked progress towards achieving your ESG goals. On top of that, by making multiple donations you will also open up some new and exciting benefits – see below.

When you have items ready to donate, contact Framework's Fundraising Team at fundraising@frameworkha.org, detailing the items you have available, along with the quantity and condition. Please also send pictures where possible.

A delivery or collection appointment will then be made with Framework's Property Services Team. Whilst Framework can collect items up to a certain size, we are always grateful to businesses who are able to deliver to our storage unit in Bulwell, Nottingham. This saves Framework vital funds and will often mean you can move your stock on sooner. Delivery or collection appointments tend to be Monday-Friday between 9am and 5pm.

Once your donation has been processed by our Property Services Team, a member of Framework's Fundraising Team will be back in touch with your tailored impact report and a personalised letter of thanks for your business.

Benefits

- Free membership
- Simple solution for meeting your ESG goals
- Tailored impact reporting
- Annual certificate highlighting your social and environmental impact*
- Company logo on Framework's website*
- 1 post per year on Framework's official social media channels exclusive to your company*
- 1 talk per year for your company from a Framework representative about the impact of your support*

*For multiple donations only



What we need

Below is a breakdown of all the items we need in order to turn a house or flat into a welcoming new home for someone who has been experiencing homelessness. If you have something to donate that isn't included on this list but you feel may be of interest, please get in touch with Framework's Fundraising Team.



Furniture

2-seater sofa – fire rated with visible markings, ideally wipe clean material.

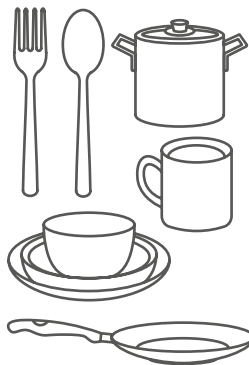
Dining table and chairs – any fabric must be fire rated with visible markings. Small sizes preferred.

Coffee table – ideally small and low levelled.

Bedside table – 2 or 3 drawer units preferred but any designs acceptable.

Wardrobe – we cannot accept wardrobes with glass or mirrored doors.

Chest of drawers – Ideally no wider than 100cm



Kitchenware

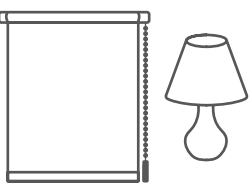
Cutlery – ideally all metal.

Dining sets (bowls, plates, mugs) – can be any design and combination, or single items.

Cooking utensils – spoons, potato mashers, peelers etc

Cooking pans – saucepans, frying pans

Oven trays – baking trays, roasting trays etc – to fit a standard domestic oven



Furnishings

Roller blinds – must be cut-to-size type, any design welcome.

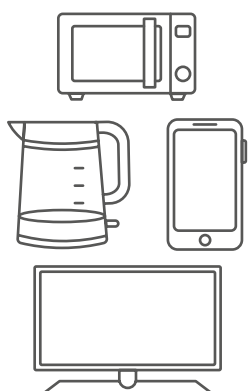
Lampshades and lamps – in working order and small size. Does not need to be PAT tested.



Bedding

Mattresses – fire rated, free from stains. Ideally single mattresses (3ft width) but can take doubles (4ft 6 in width).

Sheet, duvet and cover, pillow and case – ideally single but can take all sizes.



Appliances

Kettles – domestic 2L kettles, doesn't need to be PAT tested.

Toasters – doesn't need to be PAT tested.

Microwaves – doesn't need to be PAT tested.

Vacuum cleaners – domestic with a bagless function preferred, doesn't need to be PAT tested.

Televisions – doesn't need to be PAT tested.

Mobile phone – smart phone with charger. Doesn't need to be PAT tested.